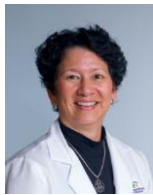


Meet the Myhre Syndrome Clinic Team

All patients of all ages are seen by the core specialists of medical genetics and genetic counseling, cardiology, pulmonary medicine and physical therapy. We generally also recommend cardiovascular imaging and lung testing. Depending on a patient's needs, we may recommend consultation with other specialists.

Please call 617-726-1561 and speak with Dr. Lin to begin the process of scheduling an appointment or referring a patient. Visit www.massgeneralforchildren.org/myhre to learn more.

GENETICS



Angela E. Lin, MD
Medical Genetics
Co-Director and
Coordinator
617-726-1561



Marcie Steeves, MS, CGC
Genetics
Counselor,
Medical Genetics
617-726-1562

CARDIOVASCULAR



Mark E. Lindsay, MD, PhD
Pediatric Cardiology,
Co-Director
617-726-3826



Christopher Learn, MD
Adult CHD
617-643-6844

NEPHROLOGY



Elahna Paul, MD, PhD
Pediatric
Nephrology
617-724-0581



Weizhen Tan, MD
Pediatric
Nephrology
617-726-2908

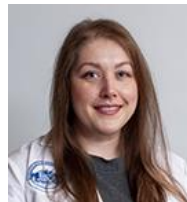
IMAGING



Brian Ghoshhajara, MD
CV Imaging,
Radiology
617-724-8519



Paul Caruso, MD
Neuroradiology



Karen Buch, MD
Neuroradiology



Katie Weagle, MS, CCLS
Child Life Specialist
Child Life Services

AERODIGESTIVE



Christopher Hartnick, MD
Pediatric
Otolaryngology
617-573-3190

ENT



Michael S. Cohen, MD
Pediatric ENT
Otolaryngology
617-573-3190

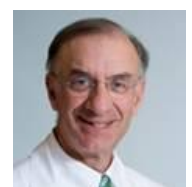
PULMONARY MEDICINE



T. Bernard Kinane, MD
Pediatric
Pulmonary
Medicine
617-726-7613



Peter Moschovic, MD, MPH
Pediatric
Pulmonary
Medicine
617-726-7613



Leo Charles Ginns, MD
Adult Pulmonary
Medicine
617-726-1718

PEDIATRICS



PHYSICAL THERAPY



Jessica Garton, PT, DPT
Physical Therapy
617-726-2961

PEDIATRIC ORTHOPAEDICS



Brian Grottkau, MD
Pediatric Orthopaedics
617-726-8523

NEUROPSYCHOLOGY



Mary "Molly" Colvin, PhD
Adult
Neuropsychology



Amy Morgan, PhD
Pediatric
Neuropsychology

DERMATOLOGY



Evelyn Lilly, MD
Adult and Pediatric
Dermatology

RHEUMATOLOGY



Mary B. Bolster, MD
Adult
Rheumatology



Holly Rothermel, MD
Pediatric Rheumatology

NEUROSURGERY



William Butler, MD
Pediatric Neurosurgery

GASTROENTEROLOGY



Kriston A. Ganguli, MD
Pediatric Gastroenterology
617-726-8705

PEDIATRIC ENDOCRINOLOGY



Lynne L. Levitsky, MD
Pediatric Endocrinology
617-726-2909

LURIE CENTER (LEXINGTON)



Anne Neumeyer, MD
Medical Director
Pediatric Neurology



Sarah Kadzielski, MD
Pediatric
Gastroenterology
617-726-1450

LURIE CENTER (LEXINGTON)



Nora Friedman, MD
Pediatric Psychiatry



Yamini Howe, MD
Developmental-
Behavioral
Pediatrics



**Suzanne Bloomer
Hiramto, MA**
Family Center Support
781-860-1728

PARENT ADVOCATE



April Lanord
MA Parent Advocate
"Ambassador"

MYHRE SYNDROME FOUNDATION



Justin Smith
jsmith@myhre
syndrome.org



Kathy Young
KYoung@myhre
syndrome.org



Maia Aziz
MAziz@myhre
syndrome.org



www.myhresyndrome.org